

BENCHWORK CONSTRUCTION on the BOUNDARY

Friday Dec 11, 2015

Following on from the very successful and enjoyable progress made on the Boundary a week ago on Friday December 4th,

Scott, Chuck, and John gathered and pressed on creating a “Cage” , along with lots and lots of sawdust -

Most of which was blown out into the neighbourhood!!

Ken was busy with the continuing saga of his home renovations, and as it was a lovely day, just right for outdoors work,

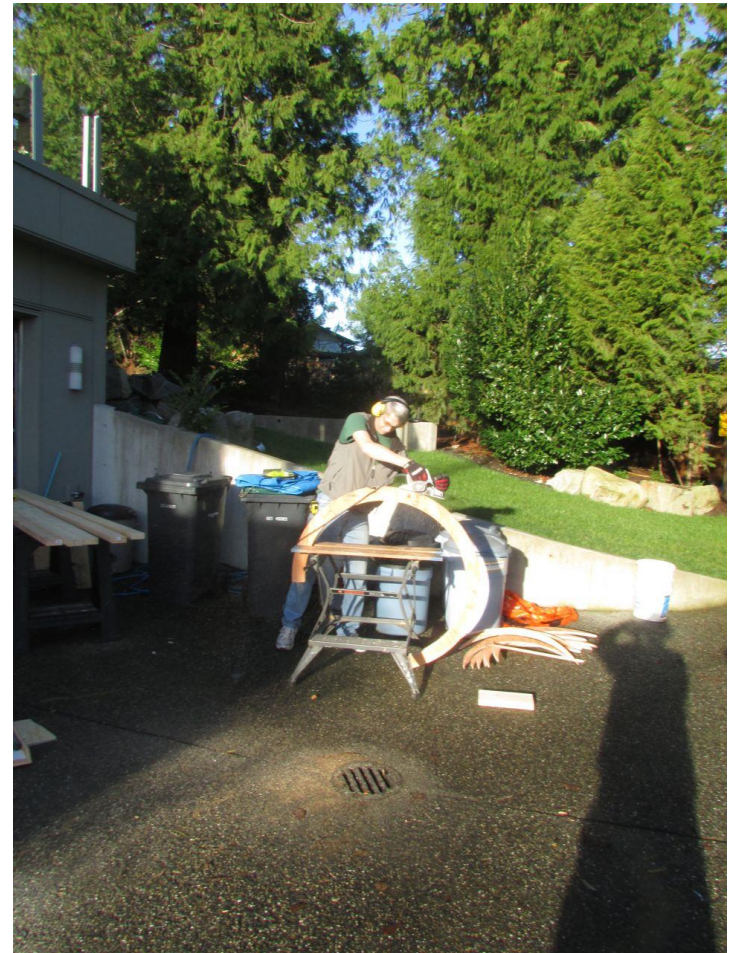
We are sure he made a good call and has made good progress !!

I will leave the full explanation and plans for the cage to Scott.

It is IMHO a very innovative way to construct a series of turn back loops which keep trains quite visible during operating sessions.

Respectfully submitted John Green

When we arrived Scott was already hard at work moving equipment into position, and rounding off one of the ends of the cage using an electric planer - You can see the sawdust flying !!



Chuck is getting busy using the Chop Saw cutting the vertical bars of the cage to the required length



Meanwhile the Railroad room, more progress had been made, the floor panels had been cut to shape around the studs and attached to the raised floor



Here is the updated view from the other end of the room.



Back outdoors Chuck and Scott continued to smooth the edges of the room, here they are working with the ring oriented horizontally.



NOTE 2"x4"s resting in slots in the saw horses to create a working surface

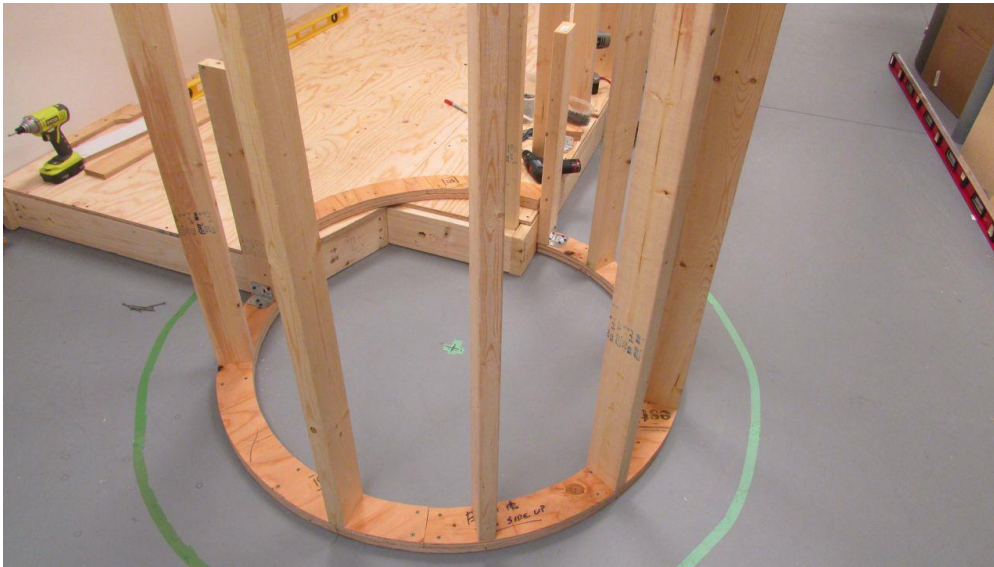
Once the rings were smoothed off, both of the rings had to have register marks so they would be in the correct orientation when the cage was assembled.



in the left hand image Chuck is pre drilling pilot holes.
The cage was assembled and stood on the end that had only $\frac{3}{4}$ of a ring
Big smiles that this had gone so well.. ;-)
The upper ring was a complete circle still below the level of the roadbed



Detail showing the $\frac{3}{4}$ ring interfacing with the raised floor.
The green ring shows the outside of the completed benchwork
on the right the Chief Engineer is happy that the design has worked!!



Next on the left the $\frac{1}{4}$ circle piece is being assembled.
This will sit on the raised floor
In the right hand image - this piece is being installed by Scott.



Once the cage is secured to the raised floor, the next task is to align and secure the new wall so it is straight and level.

The picture on the right shows the plywood pieces that will support the sub roadbed for Midway yard on the top of the wall on the side above the raised floor. Midway Yard will be view blocked from those entering the Railroad Room..



The left image shows the top of the cage with the wall aligned. Note there is a missing vertical in the cage to allow access inside.

There is lots of usable storage space in there!!

The right image was taken by Margot - shows the now aligned wall. On the lower right the GN Staging yard is already collecting track and materials!



That's all for
now Folks !!
Until next time !!
Best wishes
John